



Concrete Tester and Surveyor

CTS-02V4



Quick Start Guide

This Guide gives a simple explanation how to use CTS-02V4 in the most basic setup. Please see User Manual for details.

Confirmation of Contents in This Set

Please get an instrument body and accessories out of the case and confirm entire contents shown below.



CTS-02V4 and Strap



Hammer Unit



USB cable



Driver CD



Quick Start Guide



Certificate

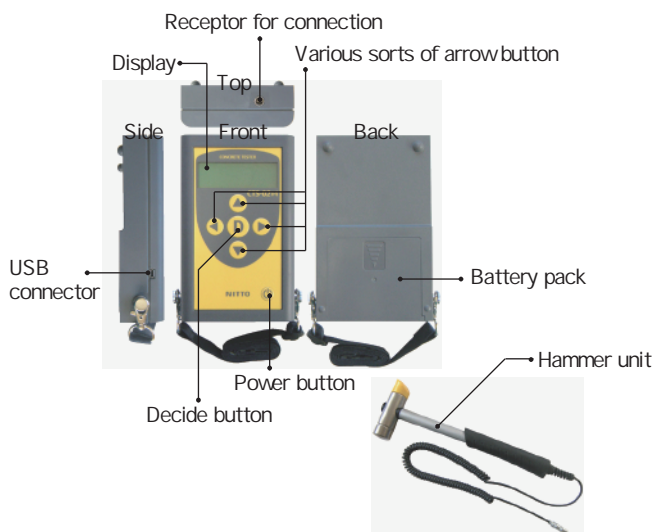


User Manual



4 Size AA batteries

Name of Parts



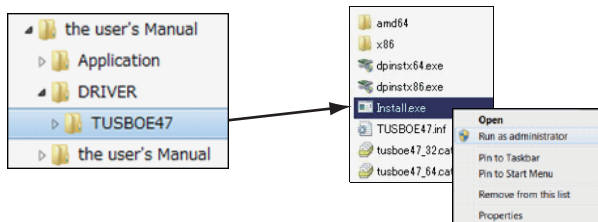
Preparation before Measurement

Installing of Driver and Registration of Device

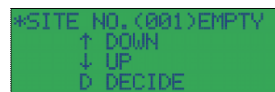
Please refer to Chapter 4 (Installing of Driver) of User Manual for details.

The device driver is compatible with Windows Vista, Windows 7, Windows 8 and Windows 10.

- 1 Start up PC and insert the driver CD into CD-ROM drive.
- 2 Run the [Install.exe] as administrator in [DRIVER] folder with right click. [DRIVER] folder is in [TUSBOE47].
- 3 Although several dialog boxes will be displayed during the installation, please chose accept to continue installation.
- 4 Connect CTS-02V4 body to the PC using an attached USB cable.



- 5 After connected, press button for three seconds to power on. Although it may be possible to connect CTS-02V4 to the PC before power-on of CTS-02V4, please confirm that CTS-02V4 is in the initial screen. The initial screen of CTS-02V4 is displayed as shown below.

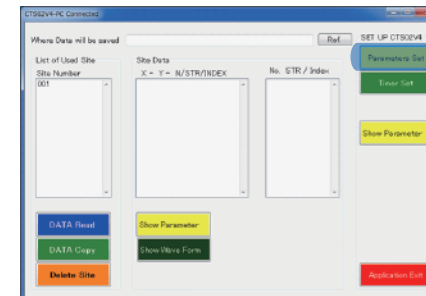


- 6 After connecting CTS-02V4 to the PC, device driver will be installed automatically.

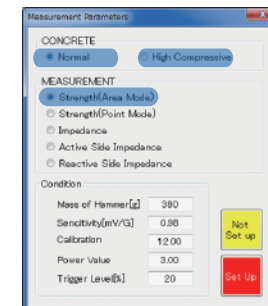
Set-up of Parameters

Please refer to Chapters 5.1 (Start-up of CTS-02V4-PC Program), 5.2 (Set-up and Writing-in of Measurement Parameters) and 5.4 (Set-up for Timer) of User Manual for details.

- 1 Program, CTS-02V4-PC.exe, in the driver CD is copied and pasted to the PC and then started up. Click [Parameters Set] button.

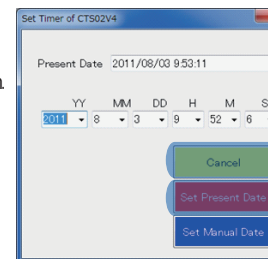


- 2 Select a type of the concrete that you want to measure. In case that putative value is less than 30 N/mm² Normal In case that putative value is 30 N/mm² or more High Compressive



Select the type of measurement. [Strength (Area Mode)] is selected here. When completed the set-up of parameters, click [Set Up] button.

- 3 To set up the internal timer of CTS-02V4, click [Timer Set] button at the initial screen of the PC program. When dialog window is displayed as shown in the right, click [Set Present Date] button. When renewed the timer, click [Cancel] button.



- 4 Click [Application Exit] button to exit the application.
- 5 Press [Power] button in CTS-02V4 body for 3 seconds to power off.
- 6 Pull off USB cable from PC and CTS-02V4 body.

