



Concrete Tester and Surveyor

# CTS-02V4



## Quick Start Guide

This Guide gives a simple explanation how to use CTS-02V4 in the most basic setup. Please see User Manual for details.

### Confirmation of Contents in This Set

Please get an instrument body and accessories out of the case and confirm entire contents shown below.



CTS-02V4 and Strap



Hammer Unit



USB cable



Driver CD



Quick Start Guide



Certificate

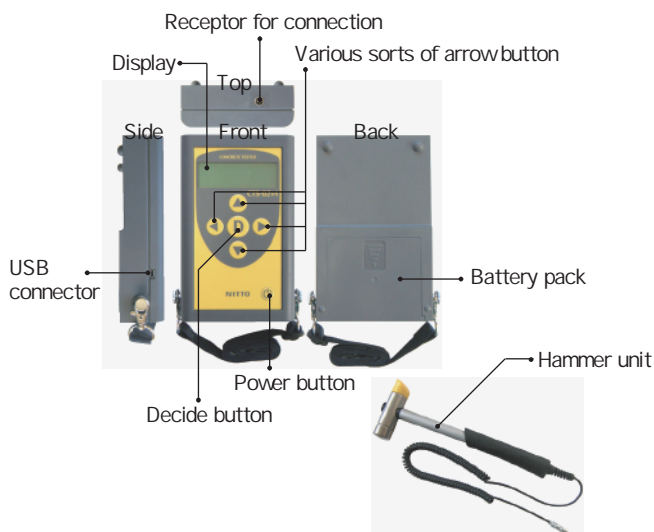


User Manual



4 Size AA batteries

### Name of Parts



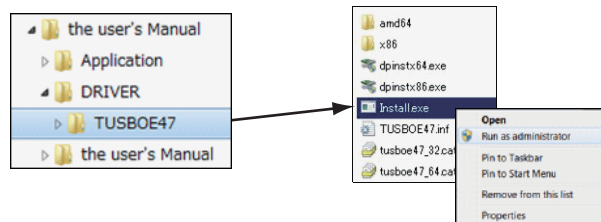
## Preparation before Measurement

### Installing of Driver and Registration of Device

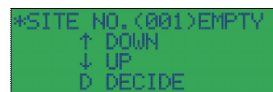
Please refer to Chapter 4 (Installing of Driver) of User Manual for details.

The device driver is compatible with Windows Vista, Windows 7, Windows 8 and Windows 10.

- 1 Start up PC and insert the driver CD into CD-ROM drive.
- 2 Run the [Install.exe] as administrator in [DRIVER] folder with right click. [DRIVER] folder is in [TUSBOE47].
- 3 Although several dialog boxes will be displayed during the installation, please chose accept to continue installation.
- 4 Connect CTS-02V4 body to the PC using an attached USB cable.



- 5 After connected, press button for three seconds to power on. Although it may be possible to connect CTS-02V4 to the PC before power-on of CTS-02V4, please confirm that CTS-02V4 is in the initial screen. The initial screen of CTS-02V4 is displayed as shown below.

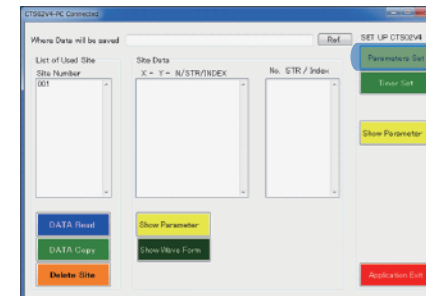


- 6 After connecting CTS-02V4 to the PC, device driver will be installed automatically.

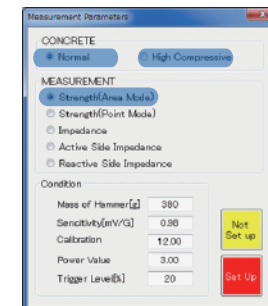
## Set-up of Parameters

Please refer to Chapters 5.1 (Start-up of CTS-02V4-PC Program), 5.2 (Set-up and Writing-in of Measurement Parameters) and 5.4 (Set-up for Timer) of User Manual for details.

- 1 Program, CTS-02V4-PC.exe, in the driver CD is copied and pasted to the PC and then started up. Click [Parameters Set] button.

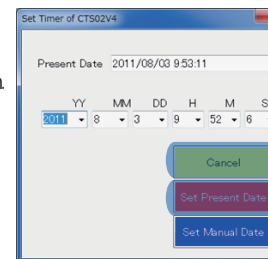


- 2 Select a type of the concrete that you want to measure. In case that putative value is less than 30 N/mm<sup>2</sup> Normal In case that putative value is 30 N/mm<sup>2</sup> or more High Compressive



Select the type of measurement. [Strength (Area Mode)] is selected here. When completed the set-up of parameters, click [Set Up] button.

- 3 To set up the internal timer of CTS-02V4, click [Timer Set] button at the initial screen of the PC program. When dialog window is displayed as shown in the right, click [Set Present Date] button. When renewed the timer, click [Cancel] button.



- 4 Click [Application Exit] button to exit the application.
- 5 Press [Power] button in CTS-02V4 body for 3 seconds to power off.
- 6 Pull off USB cable from PC and CTS-02V4 body.

